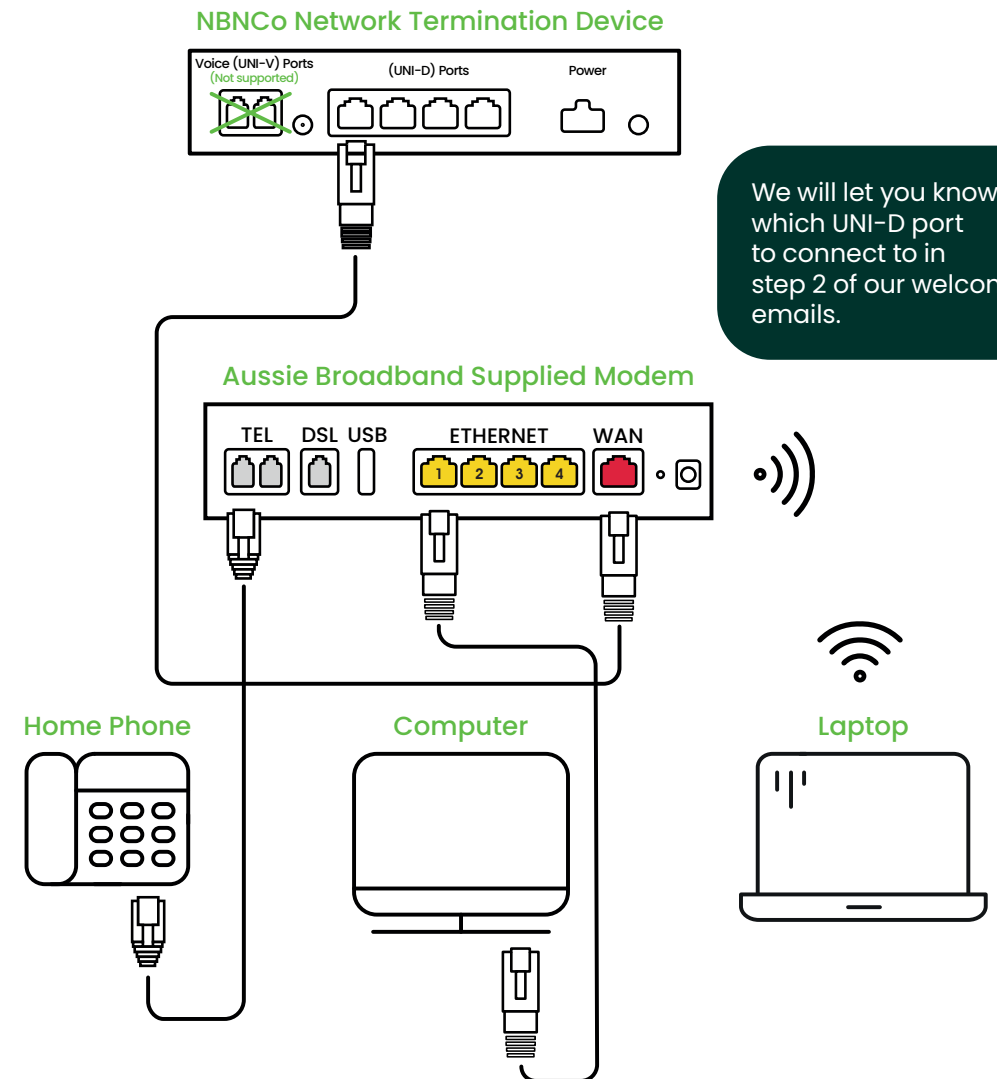


## Aussie Broadband nbn®

### FTTP self installation guide



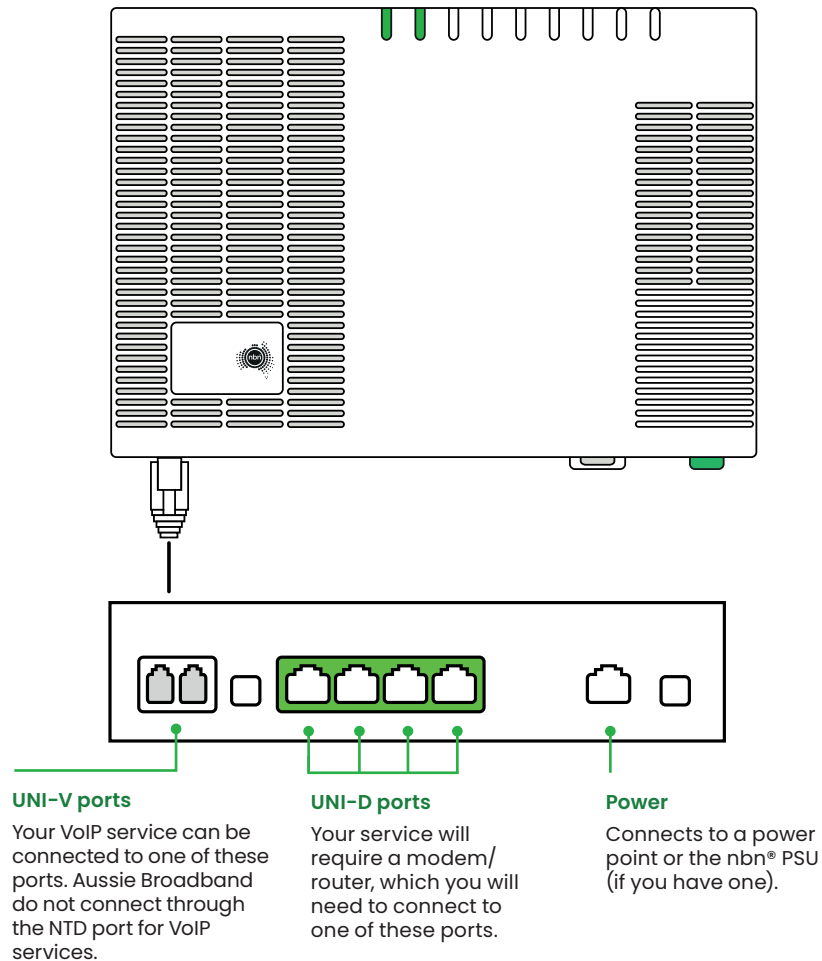
For more information or  
technical support call 1300 880 905

[aussiebroadband.com.au](http://aussiebroadband.com.au)

# Getting to know your nbn®

## Your nbn® connection box

The nbn™ have installed a connection box inside of your home, this unit has a number of ports underneath (only one of these are active with Aussie Broadband) which you can use to connect your devices to the nbn®.



## Understanding the lights on your nbn® connection box

Indicator	Status	Description	Action
Power	Off	No power	If an extension cord, power board or AC UPS is used with the NTD, disconnect these devices, plug the NBNCo Power Supply directly into the AC outlet and make sure that the AC supply is turned on
	Solid red	Operating from battery – if main power is off	
	Solid green	Operating on AC power	
Optical	Flashing green	NTD is starting up	Check optical patch lead is seated fully in Optical Port and not excessively kinked
	Off	NTD is disabled	
	Solid green	Optical link is connected	
Alarm	Flashing green	Activity	No alarm, with local Ethernet access enabled
	Off	NTD is operating without failure	
	Solid red	NTD hardware failure	
UNI D1 to UNI D4	Solid green	No alarm, with local Ethernet access enabled	None
	Off	No service provisioned or no link detected	
	Solid yellow	1G link detected	
	Flashing yellow	1G data activity	
	Solid green	10/100 link detected	
	Flashing green	10/100 data activity	